



GREATER SHEPPARTON GREATER LIVING

INSIDE

- + WORK HERE
- + EDUCATION AND CHILD CARE
- + SPORTING EVENTS, GROUPS & FACILITIES
- + ART, CULTURE & FESTIVALS





TOP 7 REASONS TO MOVE TO GREATER SHEPPARTON

1. Relaxed lifestyle and pleasant climate—more sunny days than Queensland!
2. No peak hour traffic (unless you get two red lights in a row) and easy access to everything!
3. Centrally located being only 2 hours from Melbourne (1 hr 45 mins from Tullamarine Airport) and close to the wine, high and snow countries.
4. Quality, affordable housing.
5. Diverse range of education opportunities.
6. Job opportunities or even start your own business!
7. Extensive sport, art, culture, history, events and festivals all year round.





GREATER SHEPPARTON

Welcome to Greater Shepparton, one of Victoria's most liveable regional cities!

Greater Shepparton offers the charm of a rural lifestyle combined with all the big city facilities. Everything you need is just around the corner, and it takes no time to get there. But don't just take our word for it, hear from some residents that have made the move to live and work in Greater Shepparton.

Offering an enviable lifestyle, university options, premier housing estates, and all the must-have facilities, coupled with a vibrant, diverse culture makes living and working here unique.

Centrally located — Greater Shepparton is only 2 hours to Melbourne and 1 hr 45 mins to Tullamarine airport.



MAYOR WELCOME

We are fortunate in Greater Shepparton to be able to enjoy locally grown fresh fruit, vegetables and produce not far from our own doorsteps. We have an ideal climate for growing food, with plenty of fresh air and sunshine, clean water and fertile soil. Greater Shepparton has plenty of space for agriculture, which reinforces our reputation as the food bowl of Australia.

Greater Shepparton is known for an increasing range of cafes and restaurants not just in Shepparton but also our small towns. We embrace and celebrate our unique Indigenous culture and our diverse multicultural community. With top class sporting facilities we host international, national and region sporting events better than anyone! Did you know the idea for a regional Commonwealth Games commenced in Shepparton, that's how committed we are to our sport! We also enjoy our music, art, festivals and performance. Our natural bushland and rivers, our lakes and parks, playgrounds and the network of shared paths provide a great backdrop to leisure activities. In fact, there is something to suit all tastes, cultures and interests in Greater Shepparton

Explore this special publication about the great things our region offers. You will be impressed by the educational facilities, investment and employment opportunities, and our relaxing lifestyle here in Greater Shepparton.

We are one of Australia's most liveable cities and there are many diverse career opportunities in our growing city, a range of public and private schools along with tertiary education providers.

Is there anything better than a five minute commute to work from your affordable new home with the kids able to attend one of several quality schools in the area while getting involved in a diverse culture and a variety of sporting codes? Your decision to move here will be easy when you come and check us out.

I invite you to make contact and come and talk to us about the great things happening here in Greater Shepparton.

Cr Shane Sali, Mayor Greater Shepparton City Council



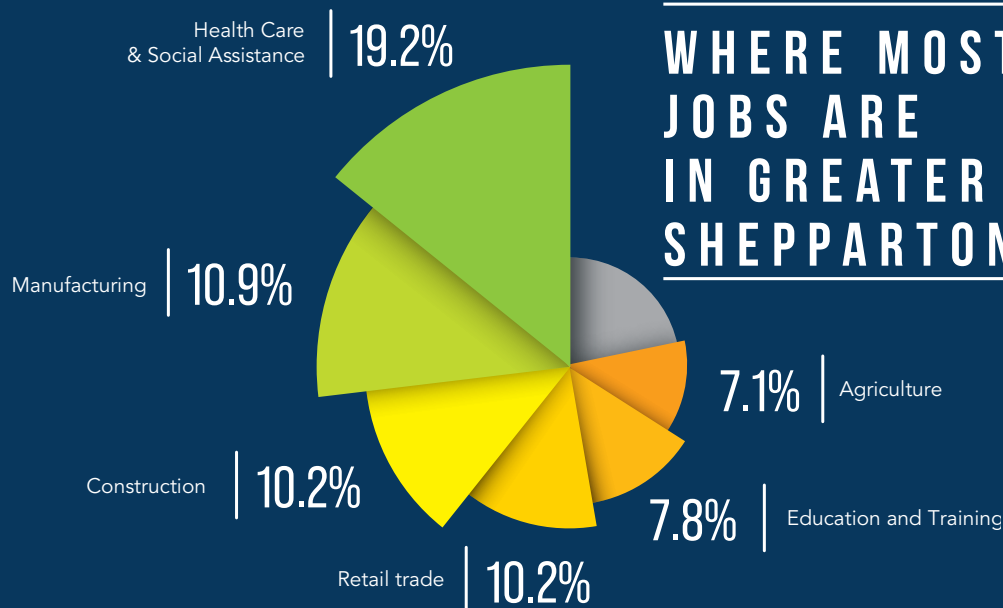


WORK HERE

If you work in the health care sector, then Greater Shepparton offers significant employment opportunities. GV Health is the largest employer in the region with more than 2,000 staff. The Health Care and Social Assistance sector generated 6,023 local jobs in 2020/21.

Health Care, Construction and Manufacturing account for 12,650 people in total or 40.3% of the local workers. In comparison, Victoria employed 13.7% in Health Care and Social Assistance; 9.3 % in Construction; and 8.6% in Manufacturing.

WHERE MOST JOBS ARE IN GREATER SHEPPARTON





MAJOR EMPLOYERS

GV HEALTH

GV Health is the main referral health service for the Hume Region. Services include a 24-hour Emergency Department, Surgery, Medical Services, Women's and Children's Services, Rehabilitation and Palliative Care, Mental Health, Outpatients, community-based health programs and services at Tatura and Rushworth. As the largest employer in the region, GV Health work with purpose and pride and are committed to respecting and embracing diversity, inclusion and accessibility for our people and community.

The talented team at GV Health consists of more than 2,600 people across five main sites. With the redevelopment nearing completion, the \$229 million state of the art facility will further enhance the acute care service delivery. The redevelopment offers a five-storey Inpatient Unit building, expansion of the current theatre capacity, new Critical Care Unit, Emergency Department, Paediatric Unit and a refurbished Maternity Services Unit.

GV Health is a critical part of the Goulburn Valley community, and make a significant public value contribution to people living, working in, and visiting, the vibrant Goulburn Valley.

TATURA MILK

Tatura Milk is an organisation focused on attracting, retaining and engaging the best talent to deliver excellence in a highly technological industry, whilst providing lifestyle opportunities and an appropriate work – life balance. Our aim is to be the employer of choice offering a broad range of career opportunities to expand your skills and experiences whilst exposing you to some of the latest technology and food safety standards used in the Dairy Industry. The people working for Tatura Milk bring together unique skills, expertise, experience, and perspectives to support the growth of the organisation.

GOTAFE

GOTAFE has two campuses in Shepparton and is one of the largest regional TAFE colleges in Victoria. GOTAFE offers a diverse range of career opportunities across the region and the state in full time, part time, contract, casual and sessional positions in areas including teaching, training, administration, IT, finance, marketing, customer service and human resources, plus other specialist roles. GOTAFE is looking for people who have relevant skills, attributes and qualifications and who have a passion for education and working within a learning environment.

GOULBURN VALLEY WATER

Supported by partnerships with consultants and contractors, Goulburn Valley Water directly employs over 200 people in operational, engineering, financial and administrative roles. Goulburn Valley Water provides drinking water, urban water and wastewater services to homes and businesses to a population of over 120,000 people in more than 50 towns. The area spreads from the outskirts of Melbourne to the Murray River.

GOULBURN-MURRAY WATER

Goulburn-Murray Water (GMW) currently employs about 480 people in various locations throughout northern Victoria. We are a diverse workforce, with a wide range of educational qualifications, skills and knowledge. We place a strong emphasis on occupational health and safety and are committed to providing a safe and comfortable working environment.

SPC

SPC has a manufacturing and distribution site in Shepparton and is owned by SPC Global Limited, trading as SPC Australia, an Australian-based company that specialises in large fruit packing and owns and operates a canning factory in Shepparton. Each year SPC offers temporary positions in manufacturing roles during the peak fruit processing season typically commencing in the middle of December and continuing through to March/April.

CAMPBELL'S

Campbell's employs approximately 400 people in Australia and New Zealand. It opened a manufacturing facility in 1964 in Shepparton due to the availability of water; abundant labour; the large tomato growing area, suitable rail facilities and enough land for agricultural research and the plant building. Campbell's creates stimulating work experiences and has people from multiple backgrounds with a wealth of experience and knowledge.

GREATER SHEPPARTON CITY COUNCIL

Greater Shepparton City Council employs approximately 850 staff in many professional, para-professional and vocational occupations. We deliver more than 100 services to the community including childcare, kindergarten, maternal and child health, waste, infrastructure management, leisure and sporting facilities, community planning, small business development, major events, visual and performing arts, and building and planning.



GREATER SHEPPARTON COMMUNITY CONNECTOR PROGRAM

We know the importance to personally welcome and connect new residents to our wonderful community. This is why we have developed the Community Connector Program a FREE service to businesses and new-to-area professionals.

The Community Connector Program (CCP) is a collaboration between Greater Shepparton City Council and Committee for Greater Shepparton and was developed to assist new-to-area residents with a relocation concierge service supporting all aspects of their relocation and assisting those people considering relocating who need the extra reassurance and support at the decision-making end.

HERE'S HOW WE CAN HELP

-  **Finding a home** – securing accommodation whether it be rental or to buy can be tricky at the moment. We have brokered a great relationship with the real estate agents and will help you navigate the best way to engage with them. We can conduct a house inspection and identify suitable areas that suits needs of work or schooling.
-  **Finding a job for your partner** – there are many employment opportunities available at the moment. We can connect you with a recruitment agency, our regional jobs platform or to a specific business that suits your qualifications.
-  **Determine the right school or childcare for your children** – there are many education options in Shepparton – public, private, Catholic, Christian, Islamic; and we also have a couple of special education schools.
-  **Provide all the local intel** – where to shop, get your haircut, or the doctor clinics taking new clients.
-  **Deeply connect you with the community** – making friends is critical to your success here in Shepparton. We can help link you with a sporting group, art class, board games club, hiking group; whatever it is that you enjoy doing.
-  **We have also have networking opportunities** – Shepp Newbies Facebook group, Captains Table dinners which are hosted by your Community Connector Coordinator throughout the year at different local restaurants and we also support the GV Young Professionals group.



BIM RUTHERFORD
Community Connector Co-ordinator
M: 0468 562 826
E: bim.rutherford@c4gs.com.au

Our Community Connector has a passion for regional communities and a drive to see people connected to create a rich and happy life. They are excited about this opportunity and sees we all have a role to play in showcasing the best of Greater Shepparton.



HOUSING – QUALITY AND AFFORDABLE

Greater Shepparton has abundant affordable land and housing and is approximately 19% more affordable than the rest of regional Victoria.



Median house sale price

\$395,000



Median unit sale price

\$289,000



Median house rental price

\$365 PW



Median unit rental price

\$290 PW

YOUNGS & CO REAL ESTATE

www.youngsandco.com.au

**GAGLIARDI SCOTT
REAL ESTATE**

www.gagliardiscott.com.au

RAY DOBSON REAL ESTATE

www.raydobsonrealestate.com.au

STOCKDALE & LEGGO

www.stockdaleleggo.com.au

CARDAMONE REAL ESTATE

www.cardamonerealestate.com.au

BAROLLI REAL ESTATE

www.barollirealestate.com.au

CHOICE GROUP

www.choicegroup.com.au

MCMAMARA REAL ESTATE

www.mcnamararealestate.com.au

KEVIN HICKS REAL ESTATE

www.kevinhicksrealestate.com.au

SHEPPARTON REAL ESTATE

www.sheppartonrealestate.com.au

YOUR SOLD REAL ESTATE

www.yoursoldrealestate.com.au



EDUCATION & CHILD CARE

Education is well covered in Greater Shepparton at all levels, with public, private and catholic schools.

TERTIARY

At the tertiary level GOTAFE has two campuses in Shepparton, the University of Melbourne has the Rural Health Campus in Shepparton and the agricultural Dookie Campus, and La Trobe University has a Shepparton campus.

SECONDARY

There are six secondary schools in Greater Shepparton providing diverse and quality education to meet a range of education needs.

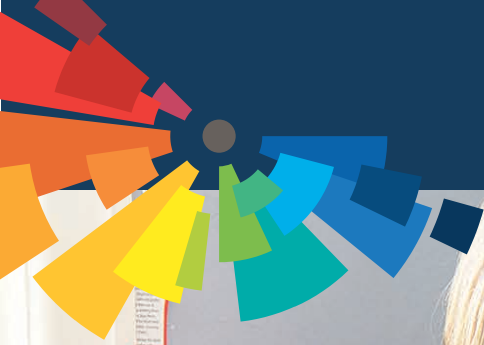
- Greater Shepparton College
- Goulburn Valley Grammar School
- Notre Dame College
- Shepparton Christian College
- St Anne's College (P-12)
- All Saints Anglican School (P-12) Opening 2024!

PRIMARY

Greater Shepparton is blessed with a mix of government and private primary schools, from large urban schools in Shepparton to smaller rural schools that have great teacher-student ratios and local community involvement. Each school has a unique identity and works hard to cater for the individual child. Your child will be spoilt for choice with opportunities for cultural engagement, diverse programs including health and wellbeing and sports.

PRE-SCHOOL

If you have little ones or are planning to start a family there are 27 kindergartens (17 council run) and 15 long day care facilities in Greater Shepparton and a council run Family Day Care service which was rated as Exceeding the National Quality Standard by the Australian Education & Care Quality Authority.



SERVICES



LAW COURTS

The \$73 million Shepparton Law Courts forms a regional headquarters for the Hume/Goulburn region providing a more accessible and responsive service for regional Victoria and a safe and secure environment for all users.

With its prominent corner position, the new building engages with the older 1930s courthouse on High Street by way of a generous landscaped public plaza that serves staff and court users for years to come.

The multi-jurisdictional Shepparton Law Courts is centred on a flexible and adaptable court and tribunal environment comprising six main courtrooms with the capacity to vary their use to meet caseload requirements. Key design principles optimise security and safety for all court users.

The new law courts officially opened in March 2018.

HEALTH SECTOR

Greater Shepparton is home to numerous GPs, physiotherapists, myotherapists, wellbeing centres and even plastic surgeons! There are two hospitals, GV Health (public hospital) and the Shepparton Private Hospital.

The project that will deliver a bigger and better, world-class hospital to meet the growing healthcare needs of the region. The redevelopment will deliver three new operating theatres, two new wards and a larger emergency department so patients can get the care and surgeries they need faster, closer to home.

This will include 64 inpatient beds, 10 intensive care unit beds, seven operating theatres, a 12-bed maternity department, 10 special care nursery cots and a dedicated eight-bed paediatric ward.

The new emergency department will have 36 treatment spaces and a nine-bed short stay unit, doubling the current emergency capacity at the hospital. Meanwhile, dialysis patients will benefit from a new and expanded 16-chair unit.

FINANCE SECTOR

Shepparton is the hub of Greater Shepparton's financial industry. This includes banks, investment firms, Super funds and insurance companies. The finance sector in the Greater Shepparton region is well covered. With over 45 accountants and auditors in Greater Shepparton, you can guarantee that you will find the service that best suits you.

LEGAL SECTOR

If you need legal assistance, there are a number of options available to you including assistance from community organisations, government funded services and the private sector.

Victoria Legal Aid (VLA), offers free advice on what you may need to do to solve a legal problem. Other assistance is available through Goulburn Valley Community Legal Centre, Victorian Aboriginal Legal Service Co-operative Ltd, Law Institute of Victoria, Shepparton Justice Service Centre and Victims of Crime.

Dispute Settlement Centre of Victoria (DSCV) can help you resolve a wide range of disputes without having to resort to taking legal action. The DSCV has staff located at 14 offices throughout regional and metropolitan Victoria.



SPORTING EVENTS, GROUPS & FACILITIES

Greater Shepparton is a strong sporting community and is recognised as regional Australia's sporting capital. The \$21m Shepparton Sports City (sporting precinct) was completed and officially opened in September 2017. Shepparton Sports City is home to 11 different sporting codes housed in one central location.



SPORTING EVENTS

Greater Shepparton hosts many international, national and state sporting events such as BMX nationals, National Moto Cross, softball masters championships, tennis, annual state-wide junior basketball tournament, International Beach Volley Ball and World Cup Equestrian Qualifying just to name a few.

PLAYGROUNDS

Greater Shepparton City Council is strongly committed to promoting access to leisure and recreation facilities and services that are responsive to the cultural, social, recreational and demographic diversity of our community. We are peppered with playgrounds and parks and have three skate parks and an all-abilities playground to cater for the needs of children and families of all abilities.



SHARED PATHS

There is an extensive shared path network for cycling, walking and running which runs through areas of natural beauty, including forest and river environments, and are connected in places by on road access links. Cycling is a breeze in Greater Shepparton with most of the countryside being flat but if you want a challenge there is always Mt Major at Dookie for the mountain bikers!

FOR FAMILIES

If you enjoy fun, free or low cost family activities, check out Greater Shepparton City Council's award winning Activities in the Park program which encourages people to be outdoors, physically active and a part of their community. Greater Shepparton also has Australia's Biggest Adventure Playground. KidsTown is over two hectares of outdoor playground and is the most fun families can have for free with giant slides, a maze and enough playground equipment to keep the kids occupied for days!

FOR EVERYONE

Greater Shepparton is fortunate to have excellent golf courses and a huge variety of gyms including Council's very popular Aquamoves which includes indoor and outdoor pools, group fitness classes, a gym, allied health services and learn to swim programs. If running is your passion, why not join the Shepparton Runners Club, come along to the free weekly Parkrun event or join the Shepparton Triathlon Club if you really want to push yourself. There is no excuse for not being active!





ART, CULTURE & FESTIVALS

Greater Shepparton is renowned for its cultural diversity and the welcome we extend to new arrivals with just over 14.9% of the population identifying as being born in a country other than Australia. We also have the largest Indigenous population in regional Victoria. We celebrate our diversity in many ways through art, events, festivals and experiences.



SHEPPARTON ART MUSEUM

Shepparton is home to the Shepparton Art Museum (SAM) housing a significant collection of Australian and International Ceramics. SAM's collection also includes historical and contemporary Australian landscape paintings, prints and sculpture, and a growing collection of Australian contemporary art. SAM has an active exhibition program that includes curated, local community and touring exhibitions.

The building, with its striking, abstract composition that echoes the scale of the surrounding river red gums attracts people both domestically and internationally to visit the art museum for its collection, temporary exhibitions and range of programs for all ages and interests in art. Co-located with Kaiela Arts and the Visitor Centre, the new SAM is a gateway to the broader Greater Shepparton region and helps to foster a stronger and more vibrant local arts community. SAM provides a destination for locals to catch up with friends and relatives for a coffee or a meal while also being a spectacular meeting place for everyone to enjoy and be proud of.

PERFORMING ARTS

Riverlinks is the home of performing arts and entertainment in Greater Shepparton. With an extensive calendar of performance programmed for venues in Shepparton and Mooroopna, Riverlinks has

the reputation for delivering one of the best arts and entertainment programs in regional Australia.

Comedy, dance, music, theatre and family entertainment – whatever you are interested in, you are sure to find something exciting all year round. Drop in, grab a coffee or a light meal and discover a world of entertainment in the heart of the Shepparton CBD.

Fancy a bit of acting? The Shepparton Theatre Arts Group (STAG) is a long running local theatre company that produces and performs several times a year with sell-out shows.

FESTIVALS

Staged every year since 1997, the Shepparton Festival is regarded as a major calendar event within regional Victoria. The Festival places an emphasis on mixing community created arts with professionally produced and performed work, hosting a strong annual program of touring professional performing arts events.

KidsFest is the biggest children and family event held in north east Victoria and boasts an impressive program full of high class entertainment, crafts and activities. There are activities and entertainment for kids up to 12 years including sports, craft, displays and roving performers. If you love food, and who doesn't, then you will love the St Georges Road Food Festival where you can sample food from across the world, the Fryers Street Food Festival,

the Albanian Harvest Festival and the Shepparton Italian Festa. Other festivals include Illuminate, featuring mesmerising lighting installations and experiences, connecting our community to the thriving arts and culture scene in the region. Out in the Open which celebrates community diversity, and Converge on the Goulburn where food, culture and performance from Greater Shepparton's Aboriginal and multicultural community meet.

MUSIC

There's no shortage of music with the popular Secret Garden Gigs and the Winter Sessions where up-and-coming and well known musicians can showcase their talent; local pubs where live music still rocks and no shortage of clubs. There are music groups you can join such as the GV Concert Orchestra or brass and wind bands if your taste is more traditional.

ABORIGINAL CULTURE

The recently installed Aboriginal Street Art across the CBD of Shepparton provides important recognition for the local Indigenous population and the significant people in their history. Immerse yourself in local Aboriginal culture at the Bangerang Cultural Centre or walk the Flats where you can learn the story about the Indigenous communities that lived along the rivers.



NATURAL ENVIRONMENT

Greater Shepparton might be flat but that doesn't mean we don't have a lot to offer! There's plenty to do from enjoying a relaxing stroll around the picturesque surrounds of Victoria Park Lake to cycling the extensive shared path network which stretches through Shepparton and Mooroopna.

With a mild climate you can enjoy the outdoors all year round in Greater Shepparton. Discover our rivers, enjoy a bit of fishing or visit one of our wetlands where you can locate our local flora and fauna. Canoe around Victoria Park Lake, or along the tranquil Goulburn River where you will gain a different view of the magnificent river environment so much a part of Shepparton.

RiverConnect is a wide reaching community project with many partners that sees the Goulburn and Broken Rivers recognised as the life and soul of the Shepparton-Mooroopna communities. The Goulburn River is one of four Heritage Rivers in Victoria. The Broken River flows into the Goulburn in the heart of Shepparton. Their floodplains and swamps between Shepparton and Mooroopna have great cultural significance and are integral to maintaining the rivers' health and supporting our community. Discover for yourself why this area is so important.

The Australian Botanic Gardens offer plenty to discover with unique sculptures and a focus on themed

gardens designed to represent the cultural, environmental, historical and agricultural characteristics of our region. It's hard to believe the site is a redeveloped rubbish tip! Take some time to explore and enjoy a view like no other from a lookout at the highest point of the gardens.

Road cycling and mountain biking are all popular with rail trails and open roads where groups of cyclists can be seen most mornings. They're a friendly, social bunch and welcome new riders. Or if you prefer check out the Shepparton Bicycle Users Group for a more leisurely approach to cycling.





FOOD

Greater Shepparton has a rich and diverse history. It is home to almost 100 different nationalities and showcases one of the best of multicultural regions in Victoria.

Greater Shepparton is a mecca for flavours of various cuisines and is fast becoming the place to go not only to dine but also to buy your unique and fresh ingredients to cook at home.

The food culture is a celebration of the valuable contributions made by Indigenous Australians and people from all over the world

who came to make their home here.

Greater Shepparton is home to a wide range of tasty food choices, whether it is for breakfast, lunch or dinner you will always be able to find something to eat. If you are here for work or leisure, there are plenty of great bites available.

With over 50 bakeries, cafes and restaurants you are spoilt for choice. Greater Shepparton is also fortunate to have some of the best wineries and farmers markets in Victoria.



WORKING AT GREATER SHEPPARTON CITY COUNCIL



KELLI HALDEN – MANAGER – PROJECTS

Kelli started her career at Greater Shepparton City Council 20 years ago as a records officer and has been able to develop a diverse and interesting career since then. Being a local with a passion for sport it was natural that she gravitated towards opportunities to work in this field.

Kelli moved to the Recreation and Parks department in 2004 where her jobs included Sporting Clubs Officer, Customer Relations and Projects Officer where she had the chance to be involved in the construction of lasting infrastructure for the community.

In 2014 Kelli became Sports Precinct Manager and oversaw the construction of a \$21m sporting complex for Greater Shepparton.

“Throughout my career with Council I have been offered training and development opportunities that have been crucial to my progression in the organisation. I completed the Council’s leadership program aimed at developing leaders in our organisation. This program, along with the insights gained from colleagues undertaking the course, has been invaluable in enhancing my leadership skills.”

Outside of work Kelli enjoys playing netball, spending time with family and friends and travelling.

“Greater Shepparton has everything that I need and offers a lifestyle second to none. Everything is a short drive away and our extensive sporting infrastructure provides the opportunity for my whole family to be involved. Why would I want to be anywhere else?”

CHRIS TEITZEL – DIRECTOR CORPORATE SERVICES

Chris is a strategic, community focused individual with exceptional corporate, governance and operation planning skills. At Council, Chris is responsible for Finance and Rates, Information Services, Regulatory Services, Communications and Engagement, People and Development and Corporate Governance.

“I’ve worked for Greater Shepparton City Council for over seven years and have enjoyed every day of it. It’s an organisation that supports its staff, encourages innovation and is family friendly. Working for local government is very rewarding as it plays an integral role in making Shepparton and the surrounding region an attractive place to live and work.”



LISA KUBEIL – INVESTMENT FACILITATION COORDINATOR

Lisa is a born and bred local who has found a fantastic career at Greater Shepparton City Council. Completing her studies locally, Lisa then went on to hold numerous positions at some of our biggest employers including at GV Health, Shepparton News and now the Greater Shepparton City Council.

Lisa has been with Council for almost 6 years starting out as a Community Development Officer, then having the opportunity to move into the Economic Development team where she has worked as the Business Development Coordinator and now currently as Investment Facilitation Coordinator.

“The main focus of my current role is to assist new businesses to navigate the multiple regulatory permits they may need to get started. This can be a time consuming process for busy business owners, my position assists with streamlining the process for them.

Lisa has a strong customer service focus and enjoys working across the business and non for profit community sectors.

“Council gives me the opportunity to do both in a meaningful way.”

In her spare time, Lisa enjoys being able to finish work for the day and go out for a hit of golf. “Greater Shepparton offers a relaxed lifestyle and it’s only a quick drive to anywhere you need to go. Who can beat a five minute drive to work?”



DID YOU KNOW?

- Ever wondered where the saying “that’s a furphy” came from? The link with Shepparton relates to the Furphy water carts and the practice of World War I troops gathering to tell stories about the latest exploits in the field. As information was restricted it was often thought the stories were made up or embellished, which became synonymous with the Furphy water carts.
- Greater Shepparton produces 25% of the state’s milk and our famous Moooving Art herd of cows reminds visitors and local alike of the connection. There’s over 90 painted cows in the herd, and yes, they do move around. Can you find them all?
- The University of Melbourne’s Dookie campus is Victoria’s oldest and Australia’s second-oldest agricultural college (1886).
- The Great Escape: German Officers from the raider HSK Kormoran, which sank the Australian HMAS Sydney off the West Australian coast, were among thousands of Italian, German and Japanese civilians accommodated in Internment Camps surrounding Tatura and Murchison during World War II. 20 of the German Officers plotted a Great Escape by tunnelling their way out of the camp.
- Two of Australia’s three foreign war cemeteries are located in Greater Shepparton at Murchison (Italian) and Tatura (German).
- In 2016, the Movie “Spin Out” (set around a B&S ball) was filmed at Greater Shepparton’s Emerald Bank. Written and directed by Tim Ferguson, using many local extras as cast members, released in Australia September 2016. Other countries followed.
- Greater Shepparton is home to one of the largest outdoor playgrounds in Australia – Kidstown which covers more than 2 hectares of land between Shepparton and Mooroopna.
- Murchison is internationally known for the Murchison Meteorite that fell over the township in September 1969. Fragments from the meteorite are studied throughout the world, and have been found to contain amino acids not previously known on Earth.



WANT TO KNOW MORE?

Contact Greater Shepparton City Council’s Economic Development on 03 5832 9700 or email council@shepparton.vic.gov.au or visit our websites www.greatershepparton.com.au or www.visitshepparton.com.au



GROW A BUSINESS HERE



What can we do for you?

Greater Shepparton City Council's Economic Development team can help your business make a home here in Greater Shepparton. We roll out the red carpet and streamline the process. We can help you by working with various departments within Council including planning, environmental health or other departments depending on the nature of your business.

We can also put you in touch with other local businesses and suppliers you may also need to liaise with. Greater Shepparton Business Centre also offers a variety of support and rental options for new and emerging businesses.

Greater Shepparton is open for business!

BUILD A LIFE HERE



One of Victoria's most liveable regional cities!

Greater Shepparton offers the charm of a rural lifestyle combined with all the big city facilities. Everything you need is just around the corner, and it takes no time to get there.

Offering an enviable lifestyle, university options, premier housing estates, and all the must-have facilities, coupled with a vibrant, diverse culture makes living and working here unique.

But don't just take our word for it, hear from some residents that have made the move to live and work in Greater Shepparton. Centrally located – Greater Shepparton is only 2 hours to Melbourne and 1 hr 45 mins to Tullamarine airport.

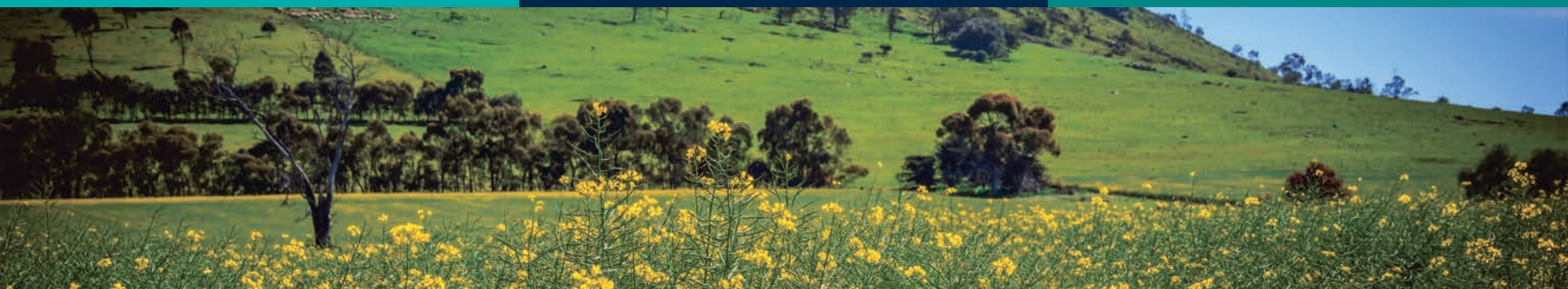
SPEND SOME TIME HERE



A fantastic place to visit all year round.

With our friendly communities and temperate climate, it's an ideal location to enjoy warm summers, just right for the outdoors, and winters, perfect for an indoor indulgence on our wealth of fantastic food and wine.

The Goulburn River forms the backbone and lifeblood of our region, winding its way through beautiful countryside, native forests and fertile farmlands, bringing life to the rich agricultural landscape which has made the area renowned as Australia's food bowl. There are opportunities for nature lovers to enjoy our tranquil waterways with popular pastimes like fishing, boating, walking and relaxing all here to be enjoyed.



WANT TO KNOW MORE?

Greater Shepparton is a great place to get your business moving or to build a life. Whether investing here, moving to the area or just visiting, Greater Shepparton is open for business!



greatthings.com.au



GreatThingsGreaterShepparton



03 5832 9700